



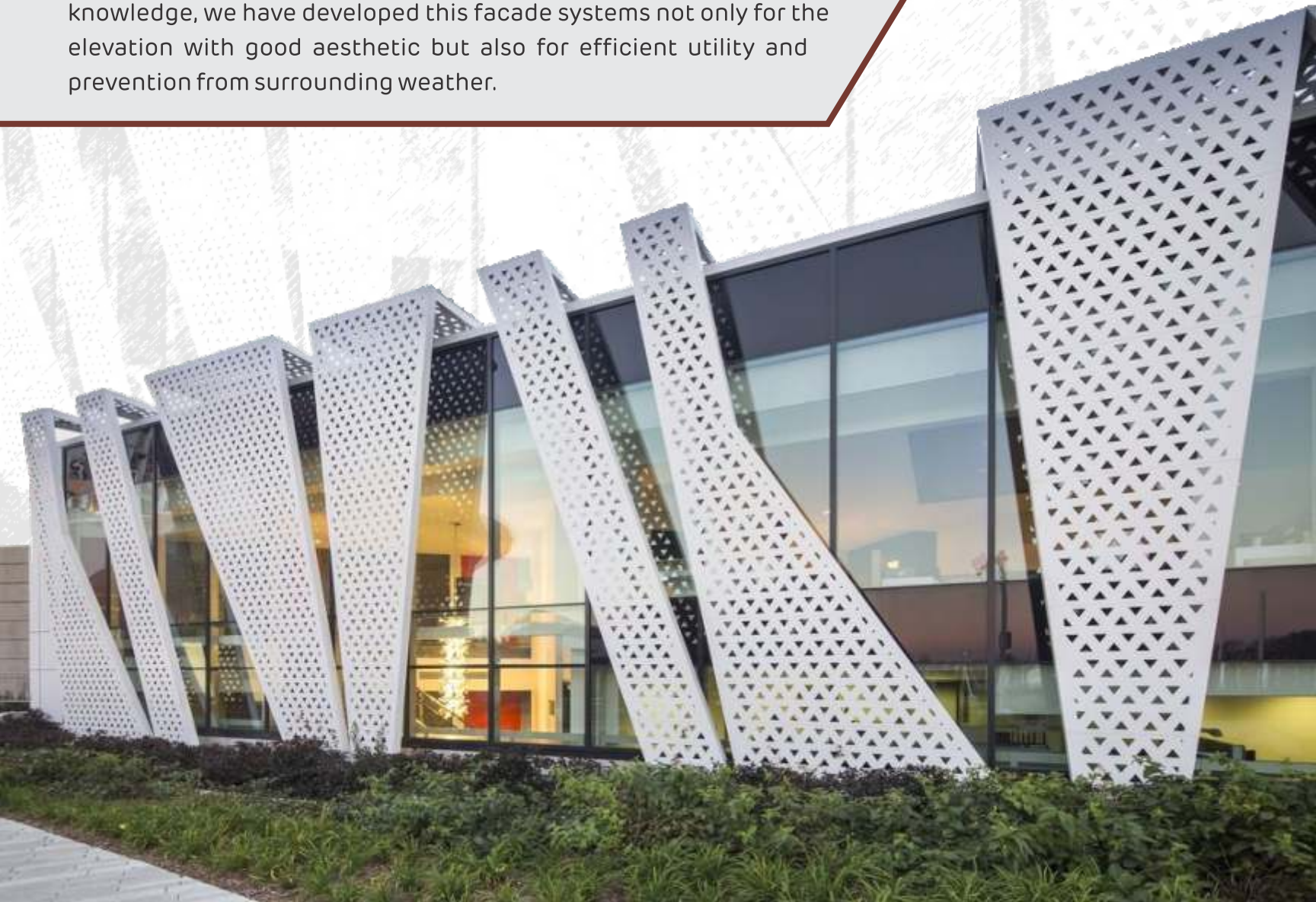
**arpitshah**  
rojects opc private limited



**FACADE**  
systems

## WHO WE ARE

**ARPIT SHAH PROJECT OPC PVT. LTD.** has served in the field of architecture & interior design for more than a decade and witnessed how the need of various interior & exterior products has remained unfulfilled due to gap in demand and supply chain. We have decided to bridge this gap and explored this sector of manufacturing. As a part of which, we are introducing our facade system. With help of our extensive field experience and knowledge, we have developed this facade systems not only for the elevation with good aesthetic but also for efficient utility and prevention from surrounding weather.





Fully recyclable



No borer, fungi and termite



Facilitates LEED certification



No swelling or shrinkage



Rich feel

# FACADE SYSTEM



ALUMINUM  
FACADE



GLASS CURTAIN  
WALL FACADE



LIGHTING  
FACADE



MESH  
FACADE



NATURAL  
WOOD FACADE



ACP  
FACADE



HPL  
FACADE



TRANSLUCENT  
FACADE



STONE  
FACADE



STEEL  
FACADE



GREEN  
FACADE



WPC  
FACADE



CERAMICS  
FACADE



3D  
FACADE



ZINC  
FACADE



Lightweight and  
easy-to-install



Maintenance  
free



Water & moisture  
resistant



Fire-  
retardant



Zero  
fumes

# OUR CLIENTS



**300 +**  
Completed Projects

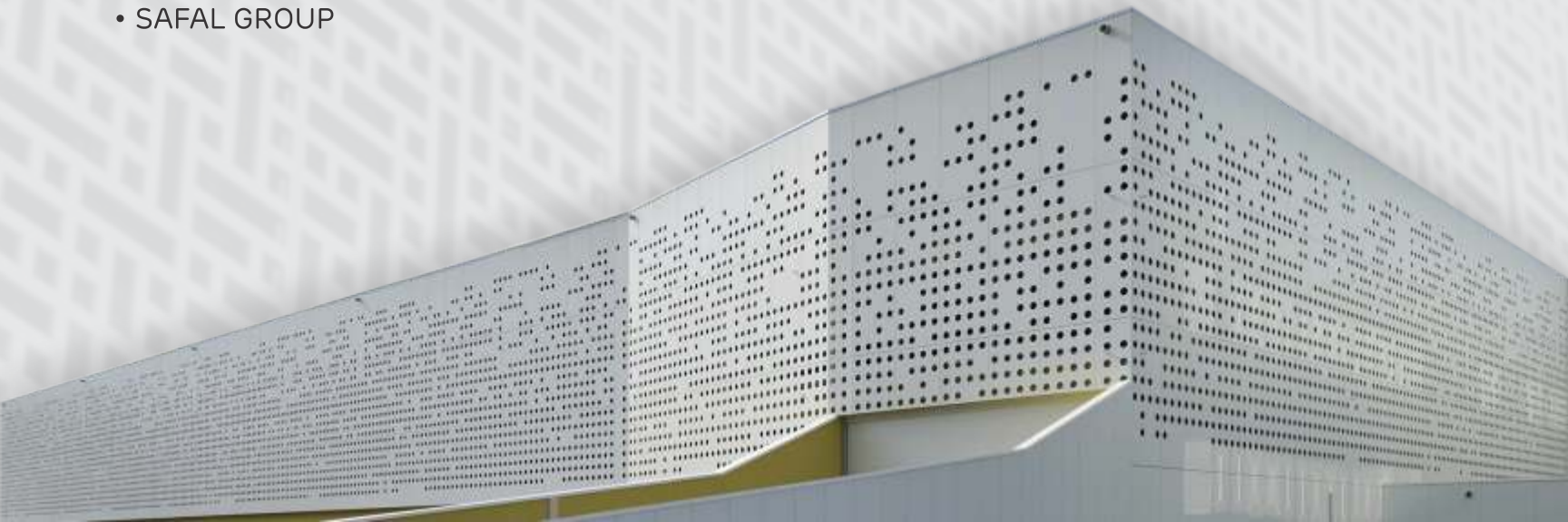


**230 +**  
Happy Customers



**40 +**  
Running Projects

- SINTEX INDUSTRIES
- PACIFICA INFRAPLUS
- ADANI REALITY
- RELIANCE INDUSTRIES
- SHIVALIK GROUP
- VRAJ VALENCIA
- GANDHI MUSEUM - RAJKOT
- GOLDEN BRIDGE - BHARUCH
- SHREEDHAR GROUP
- INTERNATIONAL AIRPORT - VADODARA
- TGB HOTEL
- GITANJALI JEWELLERS
- HYATT REGENCY
- SAFAL GROUP




# ASSOCIATED BRANDS

**AludecoR**  
Aluminium Composite Panel

**JSL**  
POLYMER SYSTEMS

**SAINT-GOBAIN**

  
**arpitshah**  
projects opc private limited

 92282 95555  96876 48764

   [www.arpitshahprojects.com](http://www.arpitshahprojects.com)

**Office :**  
FF-10, Krushnam Status,  
Anand Party Plot Road,  
Nr. Axis Bank, New Ranip,  
Ahmedabad - 382480.



**Showroom & Factory :**  
41 Shyamved Industrial Estate,  
Nr. Ranasan Circle,  
Sardar Patel Ring Road,  
Nana Chiloda, Ahmedabad - 382330.